



# Turbo Relocation in Mississippi

2012 AASHTO Subcommittee on Right of Way and Utilities Conference

Marriott Waterfront Hotel – Portland, Oregon  
April 29 to May 3, 2012



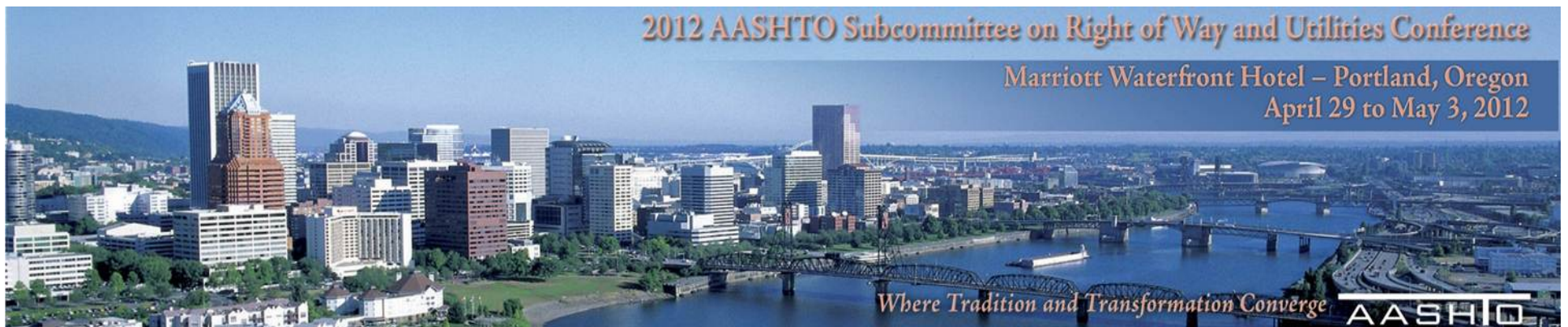
Where Tradition and Transformation Converge **AASHTO**

# Mississippi was one of the participating states in the developmental stage of the Turbo software.

- Was built under contract to AASHTO by BEM Systems
- Tutorial in nature to provide helpful hints for both novice and experienced users.



- Designed for ease of expansion to meet requirements
- Designed to be easily integrated
- Automated the process of relocation assistance in accordance with the Uniform Act.









# Turbo Benefits:

- Improved accuracy, consistency, and documentation of Uniform Act benefit calculations
- Increased efficiency by saving agent's time, accelerates project completion, and reduced training needs.

2012 AASHTO Subcommittee on Right of Way and Utilities Conference

Marriott Waterfront Hotel – Portland, Oregon  
April 29 to May 3, 2012

Where Tradition and Transformation Converge

AASHTO

- Maintains institutional knowledge and historical records
- Operates in a network environment or stand alone mode for ~~field use.~~

2012 AASHTO Subcommittee on Right of Way and Utilities Conference

Marriott Waterfront Hotel – Portland, Oregon  
April 29 to May 3, 2012



Where Tradition and Transformation Converge

AASHTO





# Turbo Disadvantages

- Program is not user friendly
- Requires too much time for inputting information
- With no off-line version at this point, there's no proof it will accelerate the project
- Turbo is a work in progress and will require increased need for training

2012 AASHTO Subcommittee on Right of Way and Utilities Conference

Marriott Waterfront Hotel – Portland, Oregon  
April 29 to May 3, 2012

Where Tradition and Transformation Converge 



# System Overview

- Turbo Relocation will be an interactive software product that will prompt users to enter data while in the office or the field.
- The system will consist of reports of summary data entered as well as calculating values.
- Turbo Relocation will share a common navigational layout which will provide access to a different functional area of applications.

2012 AASHTO Subcommittee on Right of Way and Utilities Conference

Marriott Waterfront Hotel – Portland, Oregon  
April 29 to May 3, 2012







Everybody is happy now!

